



BigBlackHen.com

The beautifully simple new way to sell your home



Lemsford Lane, Welwyn Garden City

A typical "West Side" semi-detached family home, with considerable potential and attractive gardens, close to excellent local schools and transport links. GUIDE PRICE £600,000-£625,000.

£600,000

01992 87 85 80



Overall Description

This is a typical "West Side" semi-detached house in a good-sized corner plot close to excellent schools and walking distance from the city centre and station. The property has been much loved over the years but now offers its new owners the opportunity to modernise and extend (subject to the usual consents) to create a family home to suit their needs and tastes. There are currently three bedrooms and a bathroom upstairs with an entrance hall, sitting/dining room, conservatory, kitchen, utility and cloakroom on the ground floor. The private driveway has ample parking/turning space and there is an attractively landscaped and mature back garden. This property is being sold with a Guide Price of £600,000-£625,000 with an Open House from 10.30am to 11.30am on Saturday 21st June, so please call to book an appointment.

Location

This property sits in a quiet residential area on the popular West Side of Welwyn Garden City just a short walk from a corner shop and less than a fifteen minute stroll into the centre of town with its excellent range of shopping and other amenities including The Howard Centre with its High Street shops, John Lewis, Waitrose and Sainsburys. There are excellent transport links locally with the railway station providing regular fast trains to London's Kings Cross and the A1 and M25 being only a short drive away. There are good schools at all levels in the immediate area including the well regarded Applecroft Primary School, Stanborough School, Lakeside School and a little further away, Oaklands College. There are good sporting and other facilities close by with Gosling Park Sports Centre, Welwyn Rugby Football Club and Stanborough Lakes Park all a short walk from the property and Welwyn and Brockett Hall golf clubs a short drive away.

Accommodation

From the driveway the glazed front door leads into the:

Entrance Hall 12'2 x 6'6 (3.71m x 1.98m)

Window to front. Telephone point. Stairs to first floor with two under-stairs cupboards. Radiator.

Cloakroom 6'5 x 2'6 (1.96m x 0.76m)

Window to side. Low-level WC. Wash-hand basin. Tiled floor. Radiator.

Sitting/Dining Room 17'11 x 12'9 widest (5.46m x 3.89m widest)

Window to front. Coal-effect gas fire with wooden mantel and marble hearth. Picture rail. TV aerial point. Telephone point. Radiator.

Conservatory 9'10 x 9'1 (3.00m x 2.77m)

French doors to the garden. Electric light and power.

Kitchen/Breakfast Room 11' x 10'10 (3.35m x 3.30m)

Window to rear and side. Kitchen units with work-tops and a one and a half bowl sink unit. Breakfast Bar. Eye-level double oven/grill. Gas hob with extractor/light above. Larder. Fitted dishwasher. Gas central-heating boiler. Tiled floor.

Side Porch 7' x 3'10 (2.13m x 1.17m)

Glazed door to front. French doors to rear.

Utility Room 13'2 x 6'6 (4.01m x 1.98m)

Frosted window to front and window to rear. Kitchen units with roll-top worksurfaces and a stainless-steel sink unit. Space and plumbing for a washing-machine. Space for fridge/freezer. Radiator.

First Floor 9'9 x 6'5 (2.97m x 1.96m)

From the hall stairs lead up to the landing. Window to front. Airing cupboard with factory-lagged hot water cylinder and wooden-slatted shelving. Loft hatch.

Bedroom One 12'10 x 10'6 (3.91m x 3.20m)

Window to rear. Fitted wardrobes with sliding mirrored doors. Fitted dresser with cupboards/wardrobe. Radiator.

Bedroom Two 11'1 x 9'5 (3.38m x 2.87m)

Window to side. Two double wardrobes. Radiator.

Bathroom 6'4 x 6'2 (1.93m x 1.88m)

Frosted window to side. Shower cubicle with tiled surround. Low-level WC. Vanity unit with wash-hand basin and cupboard beneath. Modern heated towel-rail. Tiled walls and floor. Extractor fan. Spotlights.

Bedroom Three 9'5 x 7'2 (2.87m x 2.18m)

Window to front. Fitted desk with drawers. Radiator.

Outside

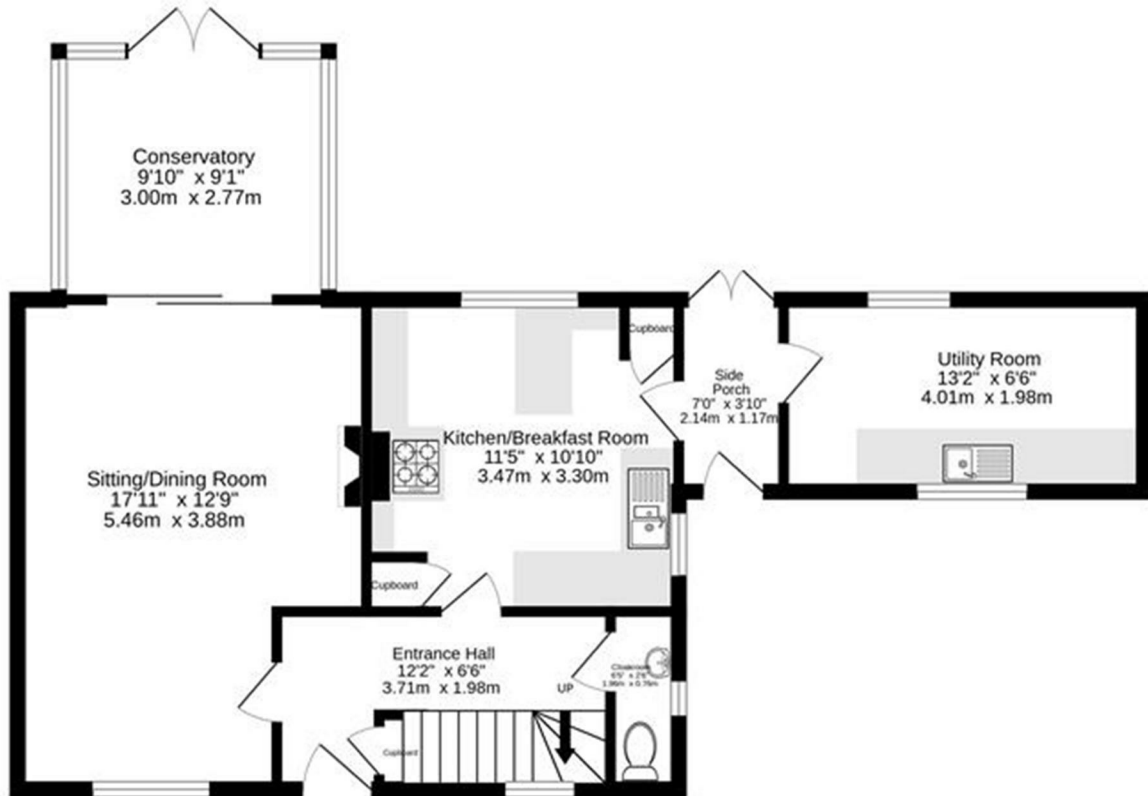
In the front garden there is a large private driveway with ample parking and turning space. The back garden is a good size and attractively landscaped with a central lawn, well-stocked borders, a patio and mature silver birch tree.

Services and Other Information

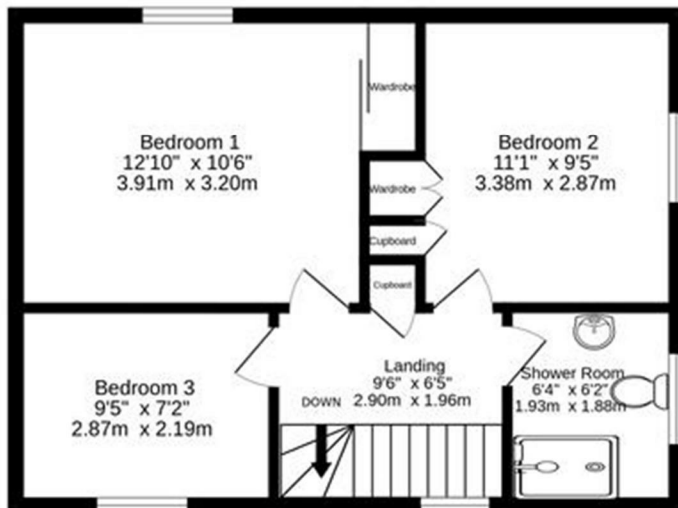
Mains water, drainage, gas and electricity. Gas central-heating. Double-glazed windows. TV aerial. Telephone connected. Council Tax Band: D.



Ground Floor
636 sq.ft. (59.1 sq.m.) approx.



1st Floor
432 sq.ft. (40.1 sq.m.) approx.




TOTAL FLOOR AREA : 1068 sq.ft. (99.2 sq.m.) approx.

Whilst every attempt has been made to ensure the accuracy of the floorplan contained here, measurements of doors, windows, rooms and any other items are approximate and no responsibility is taken for any error, omission or mis-statement. This plan is for illustrative purposes only and should be used as such by any prospective purchaser. The services, systems and appliances shown have not been tested and no guarantee as to their operability or efficiency can be given.
Made with Metropix ©2025



Energy Efficiency Rating

	Current	Potential
<p><i>Very energy efficient - lower running costs</i></p> <p>(92 plus) A</p> <p>(81-91) B</p> <p>(69-80) C</p> <p>(55-68) D</p> <p>(39-54) E</p> <p>(21-38) F</p> <p>(1-20) G</p> <p><i>Not energy efficient - higher running costs</i></p>	<p>56</p>	<p>75</p>
<p>England & Wales</p>	<p>EU Directive 2002/91/EC</p>	

Please note: appliances such as radiators, heaters, boilers, fixtures or utilities (gas, water, electricity, etc.) which may have been mentioned in these details have not been tested and no guarantee can be given that they are suitable or in working order. We cannot guarantee that building regulations or planning permission have been approved and recommend that you make independent enquiries on these matters. All measurements including amounts of land in acres are approximate.



BigBlackHen.com

